

Protecting Blue Whales and Blue Skies



Reducing Ship Strike Risk in California's National Marine Sanctuaries



Jess Morten/NOAA CINMS



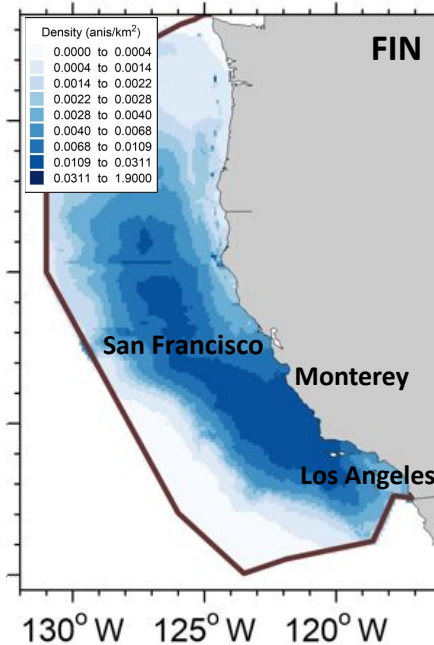
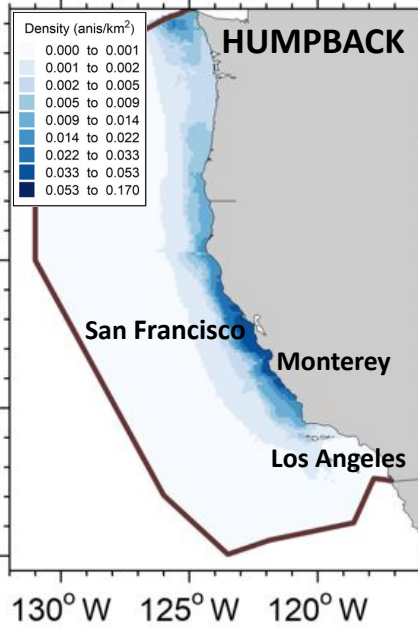
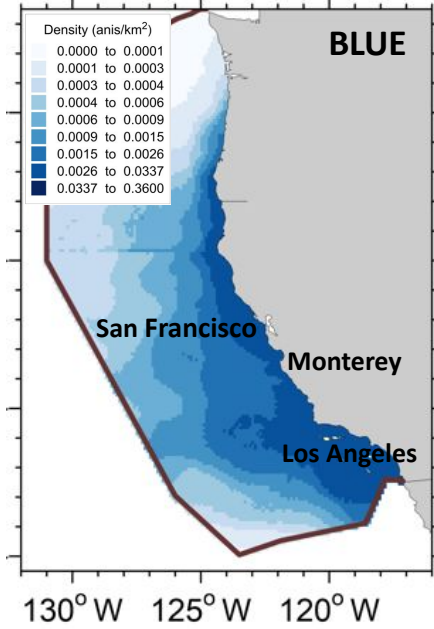
Jess Morten/NOAA CINMS



Jessica Morten, Resource Protection Specialist Affiliate
with NOAA's Channel Islands, Cordell Bank, and Greater Farallones National Marine Sanctuaries
& Greater Farallones Association

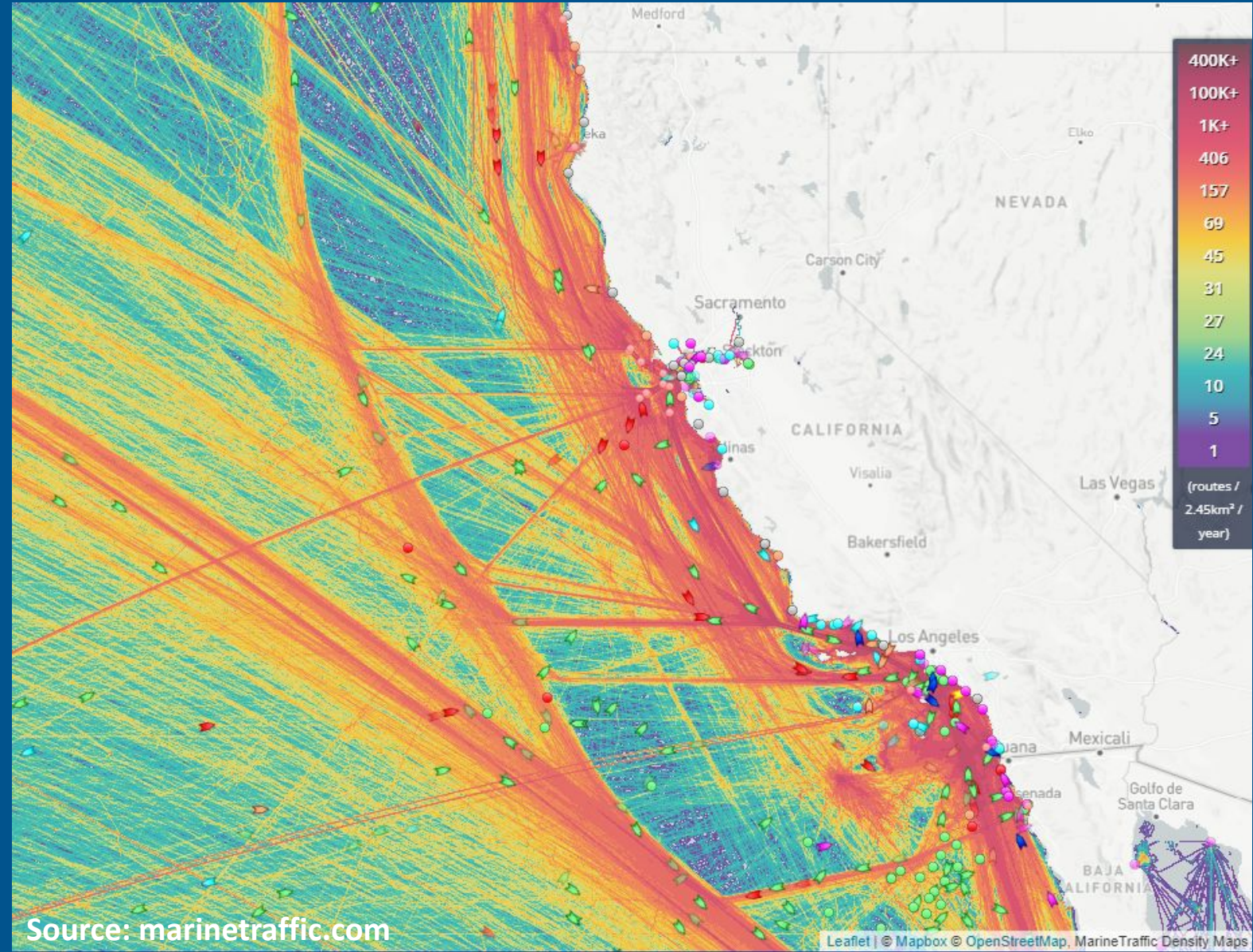


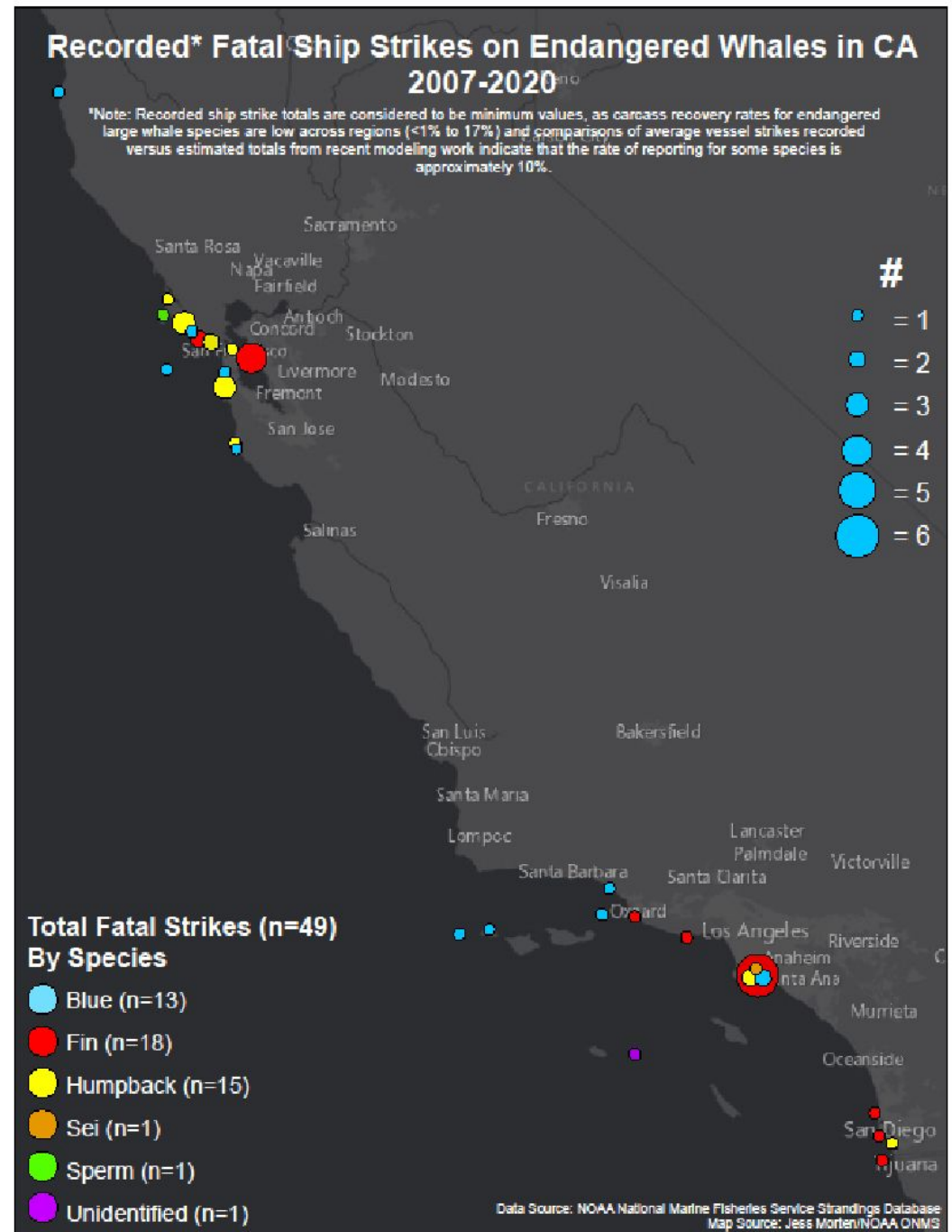
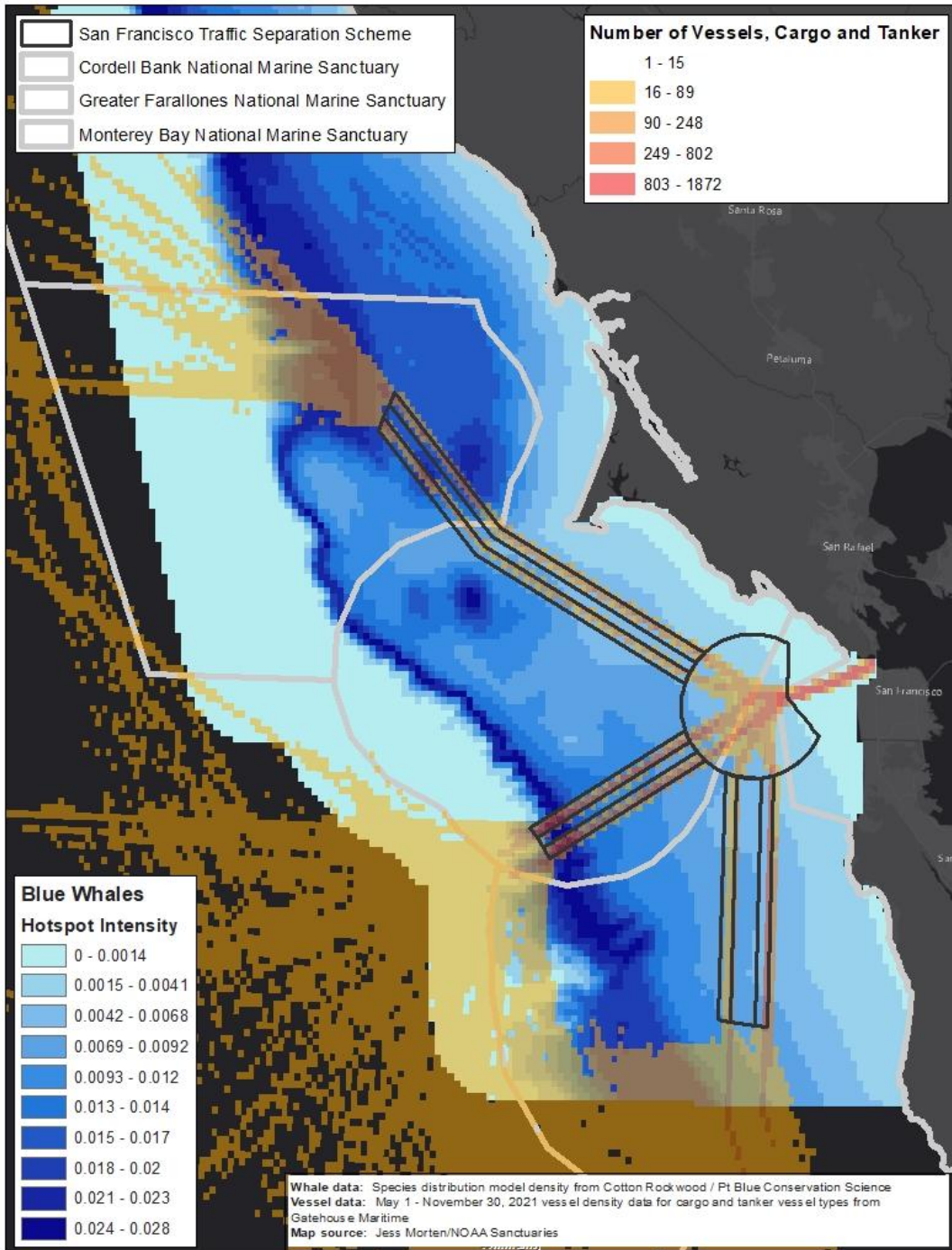
Density of 2020 Shipping Traffic off of California



Species Distribution Model average density of: blue, humpback & fin whales

Density predictions derived from Becker et al. 2020





2021 NOAA Voluntary Slow Speed Zones

(NOAA and USCG request to all vessels 300 gross tons or larger)



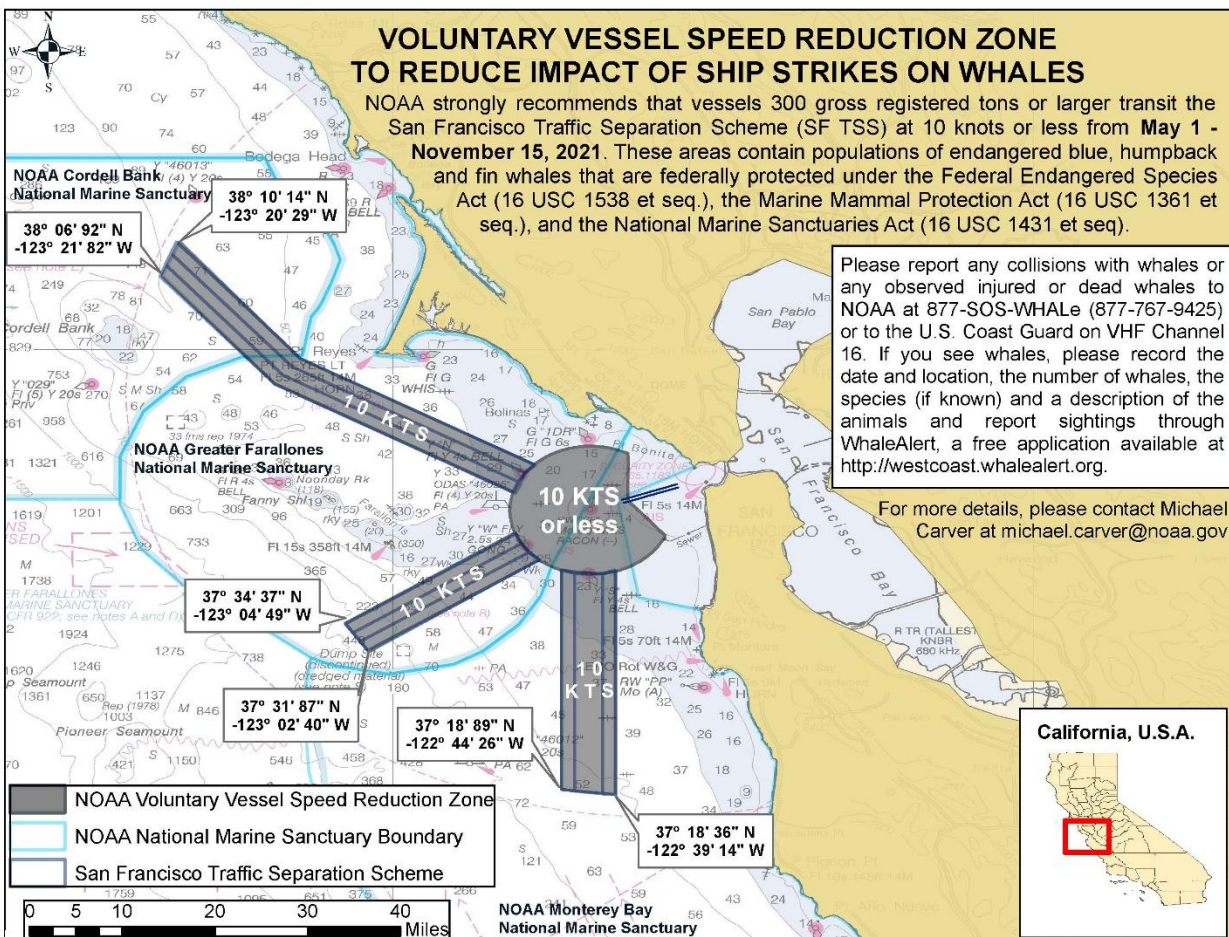
NATIONAL MARINE
SANCTUARIES

VOLUNTARY VESSEL SPEED REDUCTION ZONE TO REDUCE IMPACT OF SHIP STRIKES ON WHALES

NOAA strongly recommends that vessels 300 gross registered tons or larger transit the San Francisco Traffic Separation Scheme (SF TSS) at 10 knots or less from **May 1 - November 15, 2021**. These areas contain populations of endangered blue, humpback and fin whales that are federally protected under the Federal Endangered Species Act (16 USC 1538 et seq.), the Marine Mammal Protection Act (16 USC 1361 et seq.), and the National Marine Sanctuaries Act (16 USC 1431 et seq.).

Please report any collisions with whales or any observed injured or dead whales to NOAA at 877-SOS-WHALE (877-767-9425) or to the U.S. Coast Guard on VHF Channel 16. If you see whales, please record the date and location, the number of whales, the species (if known) and a description of the animals and report sightings through WhaleAlert, a free application available at <http://westcoast.whalealert.org>.

For more details, please contact Michael Carver at michael.carver@noaa.gov



NOAA Chart 18010 This map is not to be used for navigational purposes

15 APRIL 2021

2021 SF Bay Region
May 1 – November 15, 2021

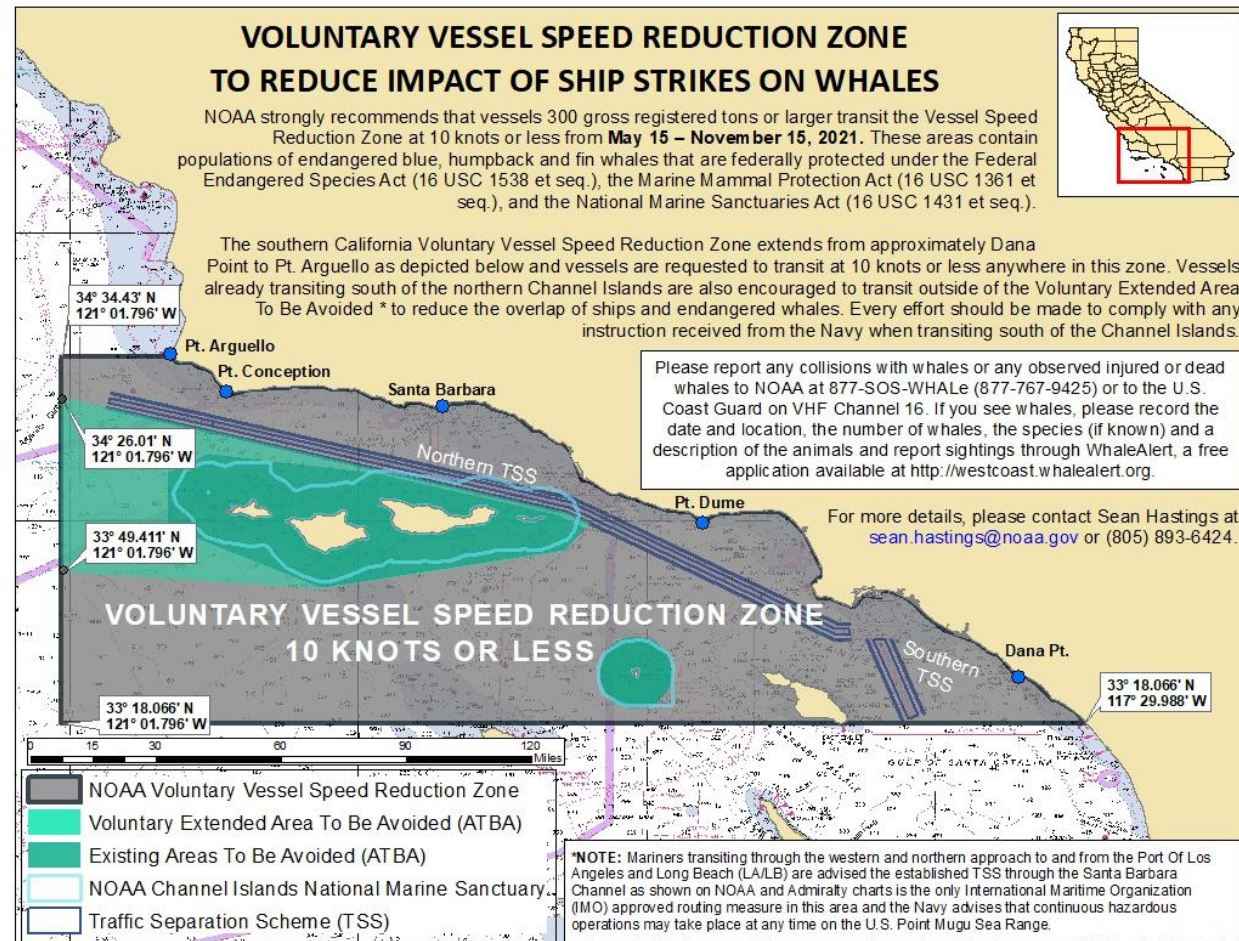
VOLUNTARY VESSEL SPEED REDUCTION ZONE TO REDUCE IMPACT OF SHIP STRIKES ON WHALES

NOAA strongly recommends that vessels 300 gross registered tons or larger transit the Vessel Speed Reduction Zone at 10 knots or less from **May 15 – November 15, 2021**. These areas contain populations of endangered blue, humpback and fin whales that are federally protected under the Federal Endangered Species Act (16 USC 1538 et seq.), the Marine Mammal Protection Act (16 USC 1361 et seq.), and the National Marine Sanctuaries Act (16 USC 1431 et seq.).

The southern California Voluntary Vessel Speed Reduction Zone extends from approximately Dana Point to Pt. Arguello as depicted below and vessels are requested to transit at 10 knots or less anywhere in this zone. Vessels already transiting south of the northern Channel Islands are also encouraged to transit outside of the Voluntary Extended Area To Be Avoided * to reduce the overlap of ships and endangered whales. Every effort should be made to comply with any instruction received from the Navy when transiting south of the Channel Islands.

Please report any collisions with whales or any observed injured or dead whales to NOAA at 877-SOS-WHALE (877-767-9425) or to the U.S. Coast Guard on VHF Channel 16. If you see whales, please record the date and location, the number of whales, the species (if known) and a description of the animals and report sightings through WhaleAlert, a free application available at <http://westcoast.whalealert.org>.

For more details, please contact Sean Hastings at sean.hastings@noaa.gov or (805) 893-6424.



NOAA Chart 18022

Chart not for navigational purposes.

2 MARCH 2021

2021 Southern California
May 15 – December 15, 2021

NOAA Voluntary VSR Results

Percentage cooperation from all vessels 300 GT or more, by year

<u>Region</u>	<u>2017</u>	<u>2018</u>	<u>2019</u>	<u>2020</u>
San Francisco Bay Region NOAA Voluntary Slow Speed Request	45%	45%	58%	64%
Southern California Region NOAA Voluntary Slow Speed Request	18%	23%	50%	54%

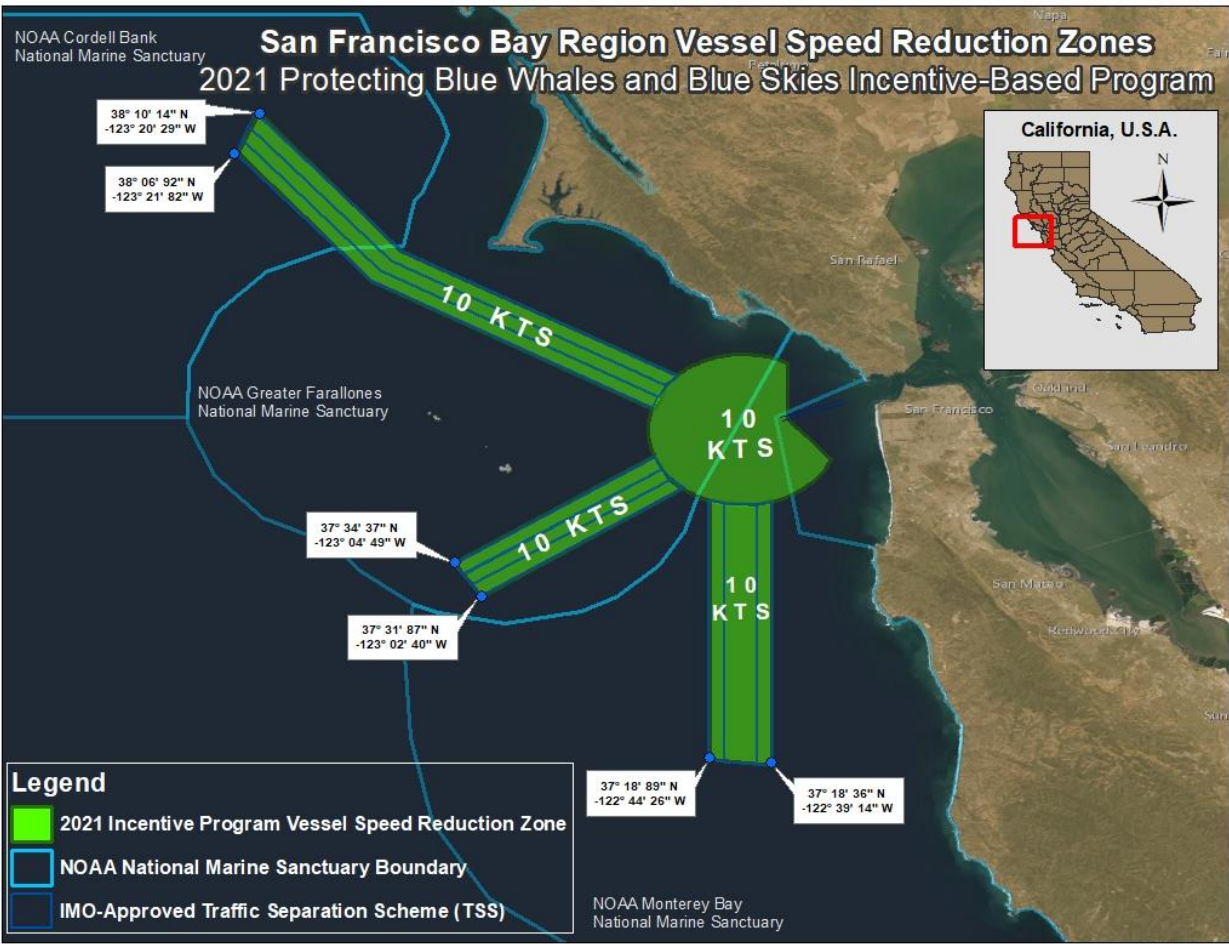


2021 Protecting Blue Whales and Blue Skies Incentive Program

(enrollment open to container and car carrier lines)

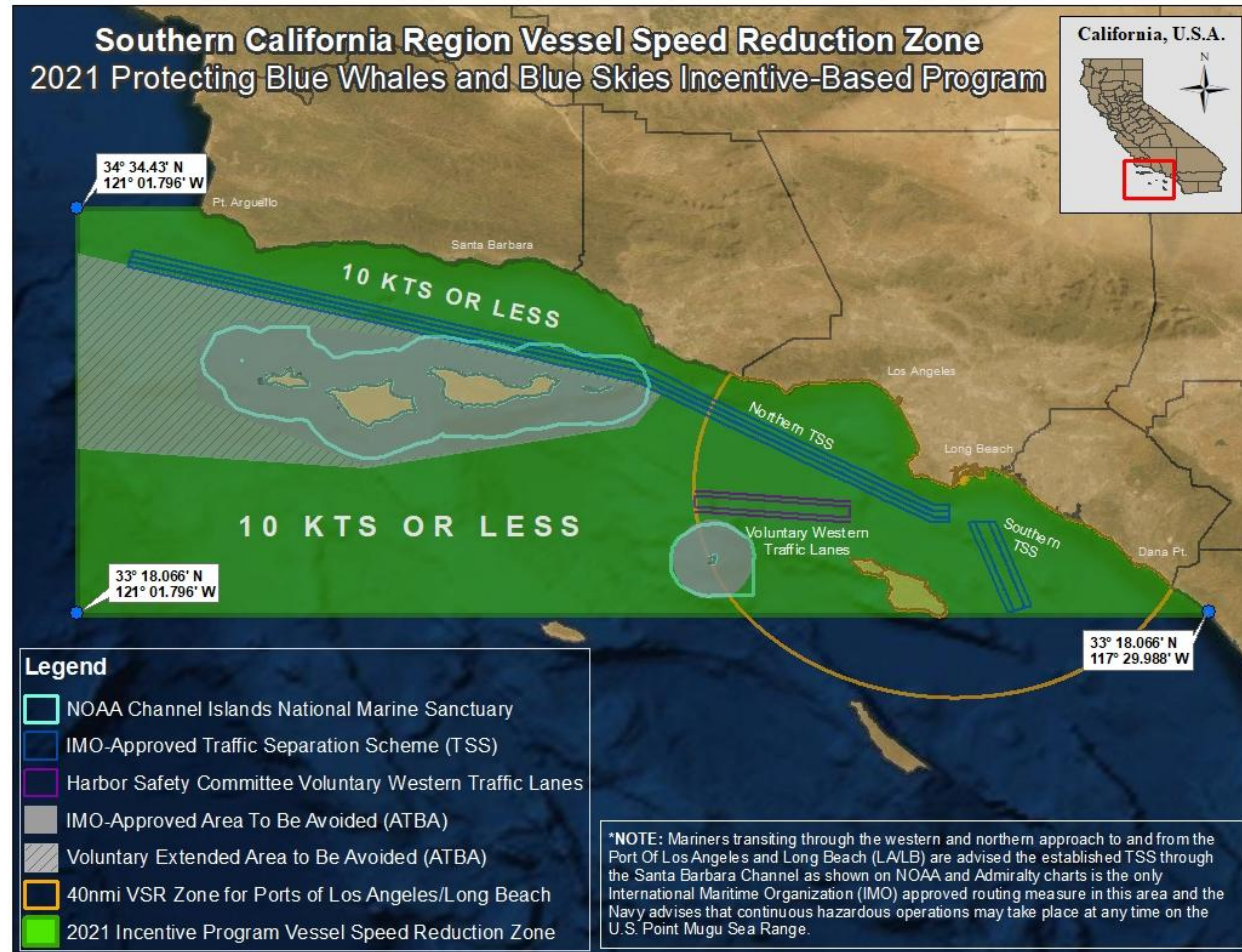


NATIONAL MARINE
SANCTUARIES



This map is not to be used for navigational purposes

06 APRIL 2021



This map is not to be used for navigational purposes

06 APRIL 2021

2021 SF Bay Region
May 15 – November 15, 2021

2021 Southern California
May 15 – November 15, 2021

YEAR	2014	2016	2017	2018	2019	2020
Area	Santa Barbara Channel	Santa Barbara Channel Region	Santa Barbara Channel Region & San Francisco Bay Area			SoCal Region and SF Bay Area
# Companies	7	10	11	12	15	16
# Vessels	14	25	44	280	349	495
Slow-speed Distance (nautical miles)	2,700	5,000	12,630	46,026	99,019	181,306
NOx Reductions (tons)	12.4	25.6	84	266	536	748
Regional GHG Reductions (metric tons)	535	1,005	2,630	8,668	17,026	24,258
Ocean Noise Reduction (Decibels [dB]/transit)	-	-	-	-	SoCal: 6 (Gold and Sapphire award tiers only)	SoCal: 4 (All award tiers)
Ship Strike Risk Reduction	-	-	-	-	-	35%*

* **Note:** This represents the proportional decrease in risk from participating vessels and not absolute estimates of mortality avoided. Slower participating transits in the San Francisco VSR zone presented 61% lower mortality risk to whales than if they did not decrease speed, while mortality risk was lowered 30% in the Southern California zone.

Thank You

Jess Morten, Resource Protection Specialist Affiliate

Greater Farallones Association

with NOAA Channel Islands, Cordell Bank, and Greater Farallones National Marine Sanctuaries

E-mail: jessica.morten@noaa.gov

