

A milestone in the making: California's globally recognized marine protected area network decadal management review

Stephen Wertz

Senior Environmental Scientist, CDFW

Sara Worden, Chenchen Shen, Amanda Van Diggelen, Elizabeth Pope, Mike Prall,
Kara Gonzales, Tammy Heitzenrater, Lara Slatoff, and Becky Ota

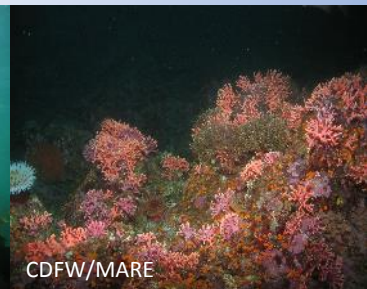
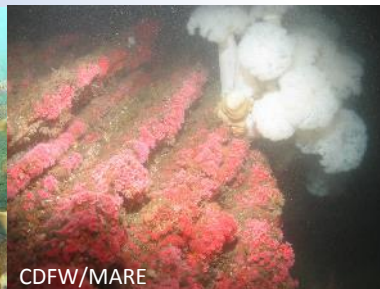
Beyond the Golden Gate Research Symposium January 19-21, 2022





Marine Protected Areas in California

- Marine Life Protection Act (MLPA), 1999
- Redesign of California's system of marine protected area (MPAs)
- Ecosystem-based approach
- Science-guided and stakeholder-driven planning process



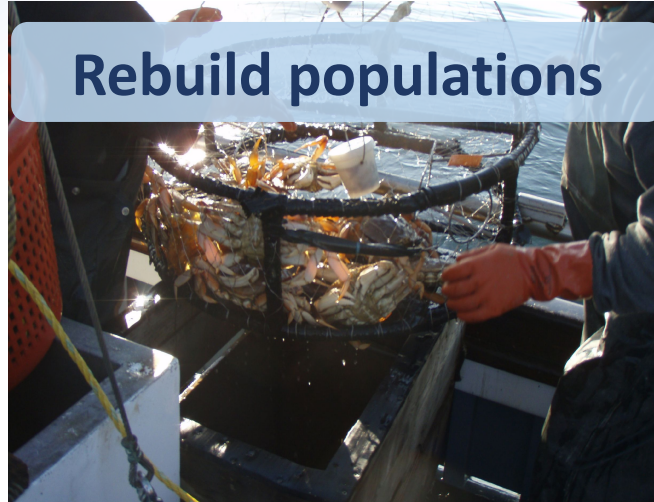


Marine Life Protection Act Goals

Protect biodiversity



Rebuild populations



Enhance research, education, recreation



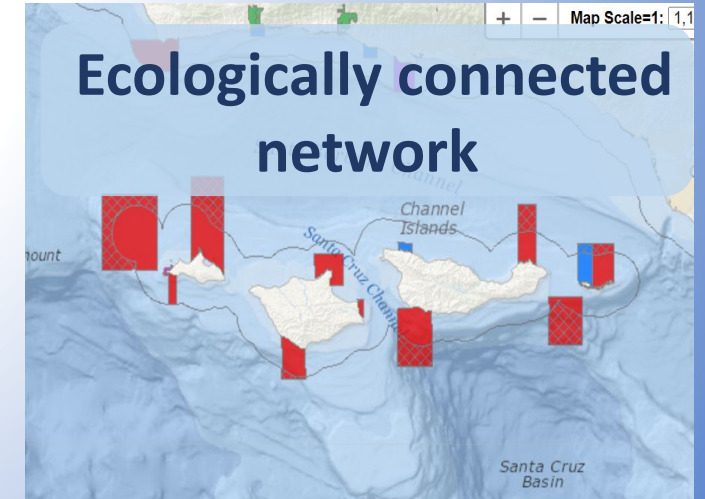
Protect marine heritage



Manage, enforce, sound science

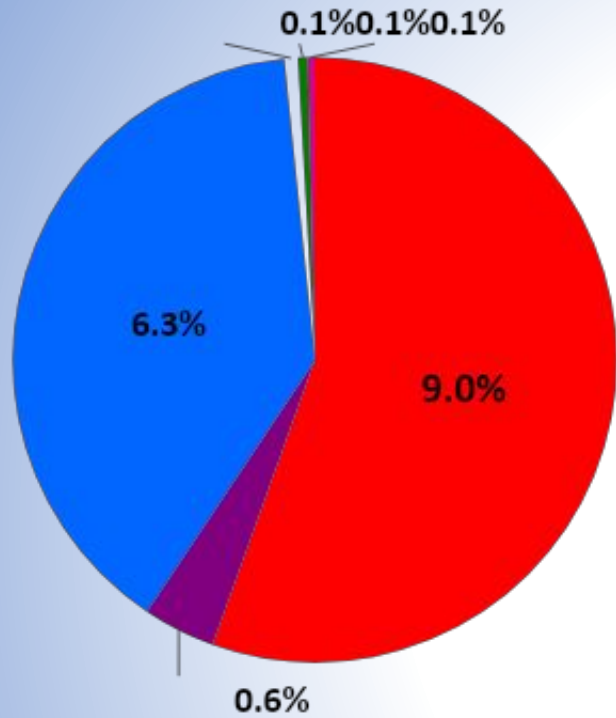


Ecologically connected network

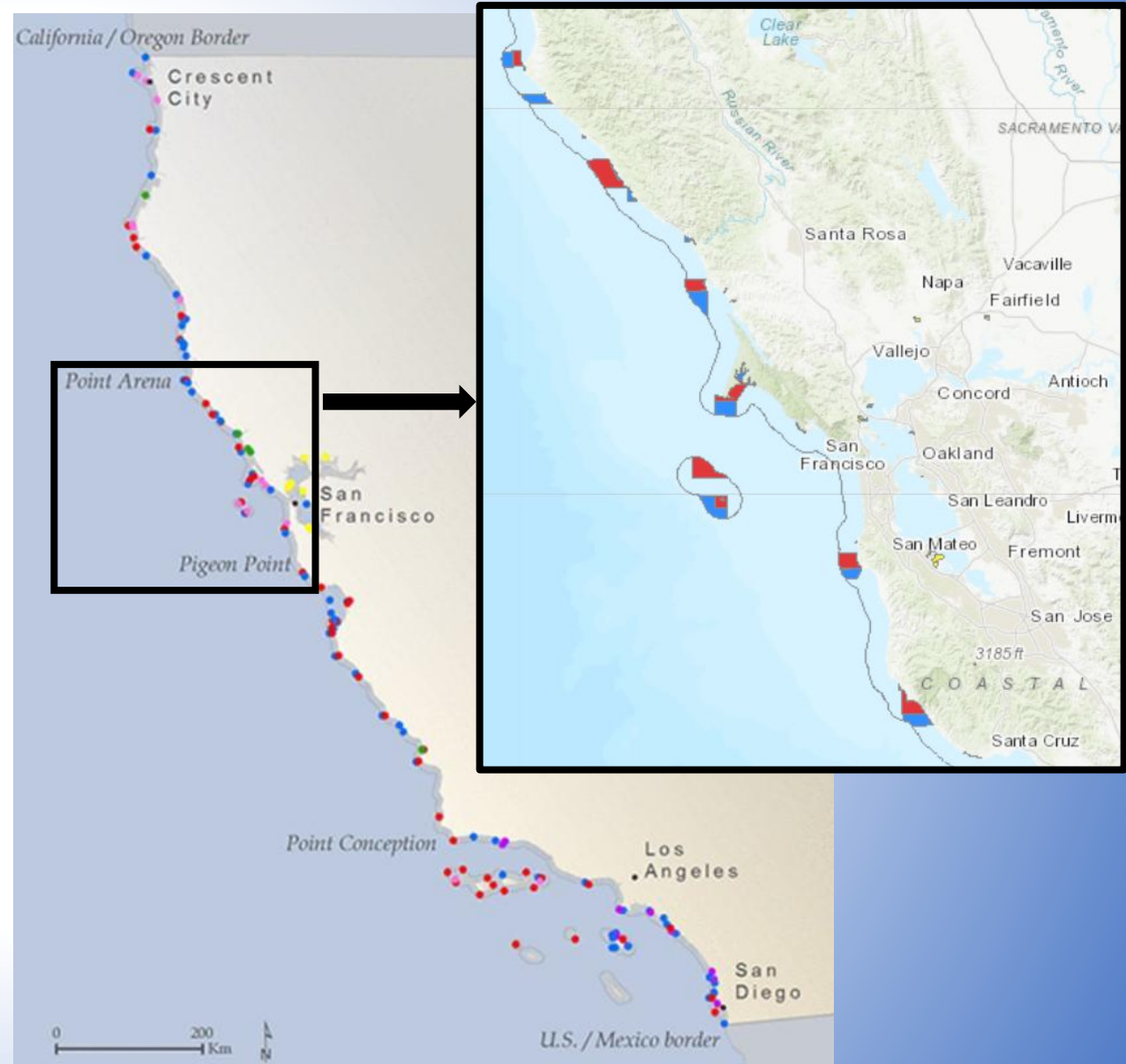




California's MPA Network



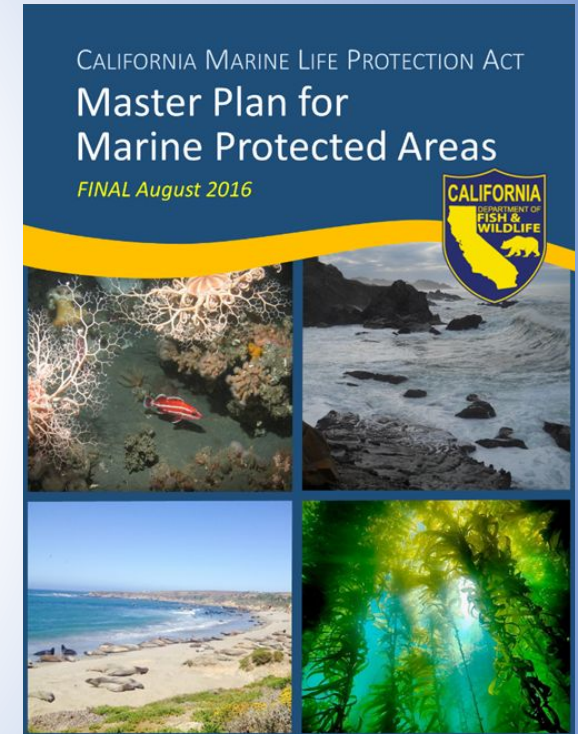
- State Marine Reserve
- State Marine Conservation Area (SMCA)
- SMCA (No-Take)
- SMCA / State Marine Park
- State Marine Recreational Management Area
- Special Closures





Master Plan for MPAs

- MLPA required the creation of the Master Plan
- Adopted by the Commission in 2008, 2016
- Established the MPA Management Program
 - Outreach and Education
 - Research and Monitoring
 - Enforcement and Compliance
 - Policy and Permitting
- Required comprehensive monitoring program
- 10-year adaptive management review cycle

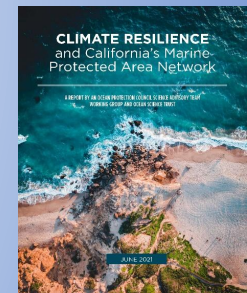
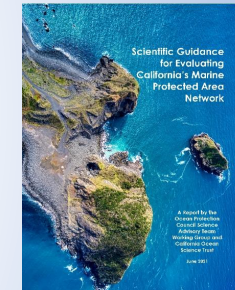
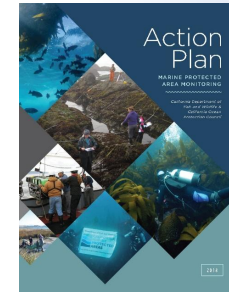




Monitoring Program and Science Guidance

Key Data Sources:

- Baseline Monitoring data (2007-2018)
- Long-term Monitoring data (2016-present)
- Network connectivity model
- Science guidance
 - MPA Decadal Evaluation Working Group
 - MPA and Climate Resilience
 - National Center for Ecological Analysis and Synthesis



CCFRP/CDFW



CDFW



Van Diggelen



Van Diggelen



CDFW



Maya George, MARiNe



CDFW/MARE



Monitoring Program

6 habitat-based, 2 oceanographic, 2 human uses



Rocky Intertidal



Kelp forest and rocky reefs



Mid-depth rocky reefs



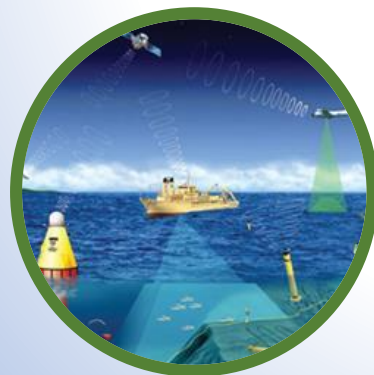
Deep habitats



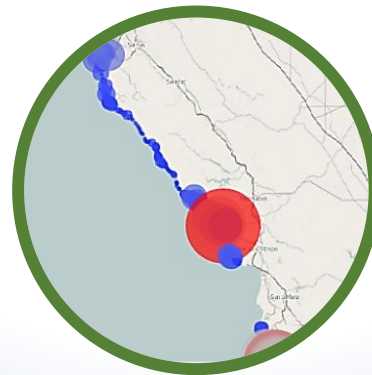
Sandy Beach and surf zone



Estuaries



Ocean Observing



Connectivity



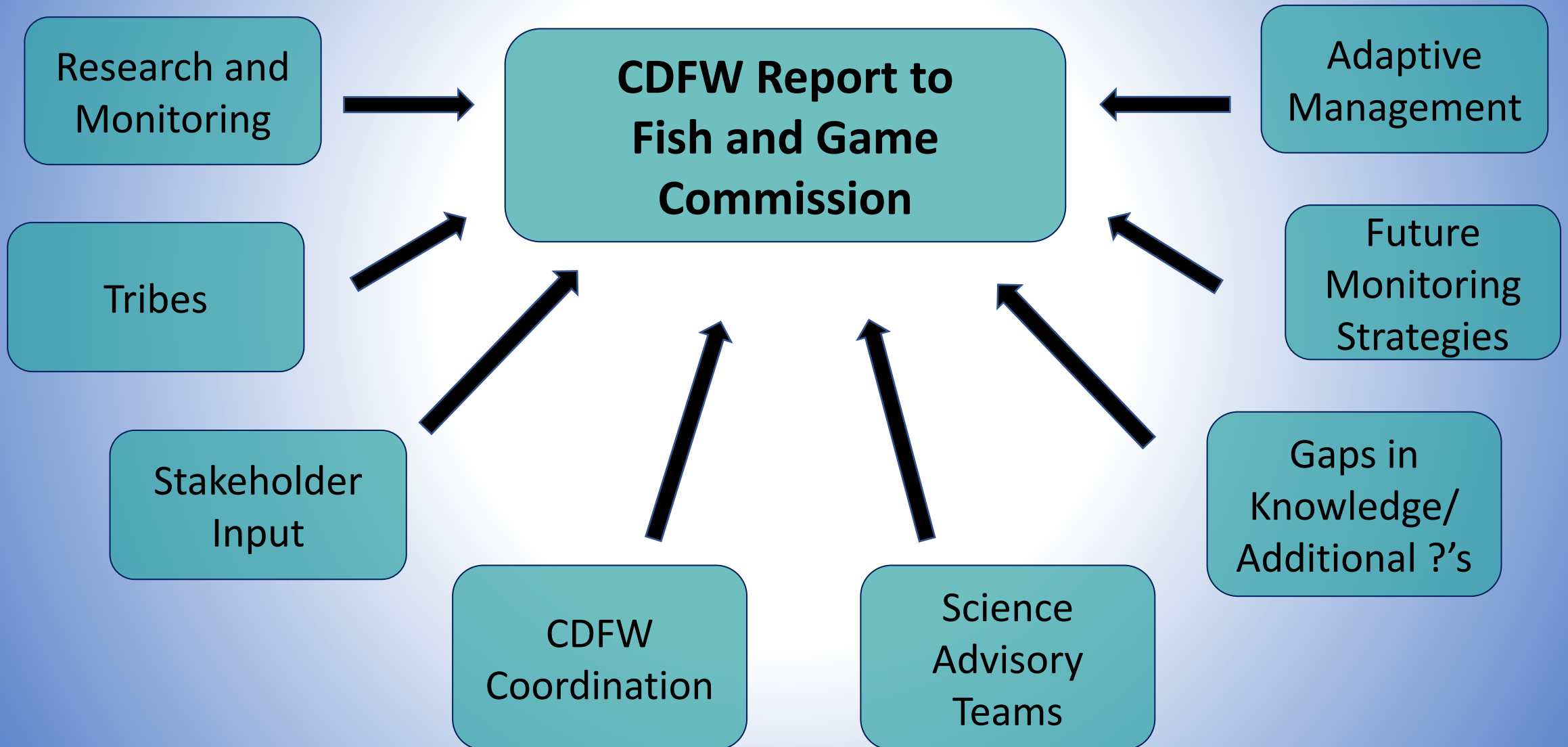
Non-consumptive uses



Consumptive uses



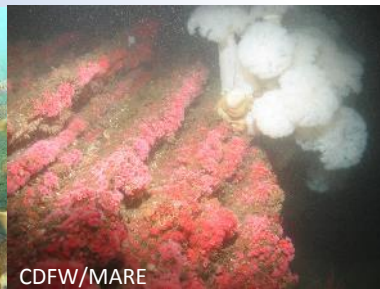
Decadal Management Review: 2023





Staying Informed

- Decadal management review landing page
<https://wildlife.ca.gov/Conservation/Marine/MPAs/Management/Decadal-Review>
- MPAMangementReview@wildlife.ca.gov
- Long-term monitoring reports, February 2022
- Learn More: community meeting key theme summary
- Learn More: research and monitoring





Thank you

Stephen Wertz, Senior Environmental Scientist

Stephen.Wertz@wildlife.ca.gov

