



San Francisco Bay
National Estuarine Research Reserve

**Welcome
To
San Pablo Bay National Wildlife Refuge
&
The Baylands Center**

San Francisco Bay National Wildlife Refuge Complex



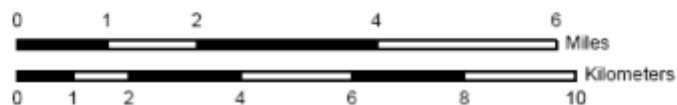
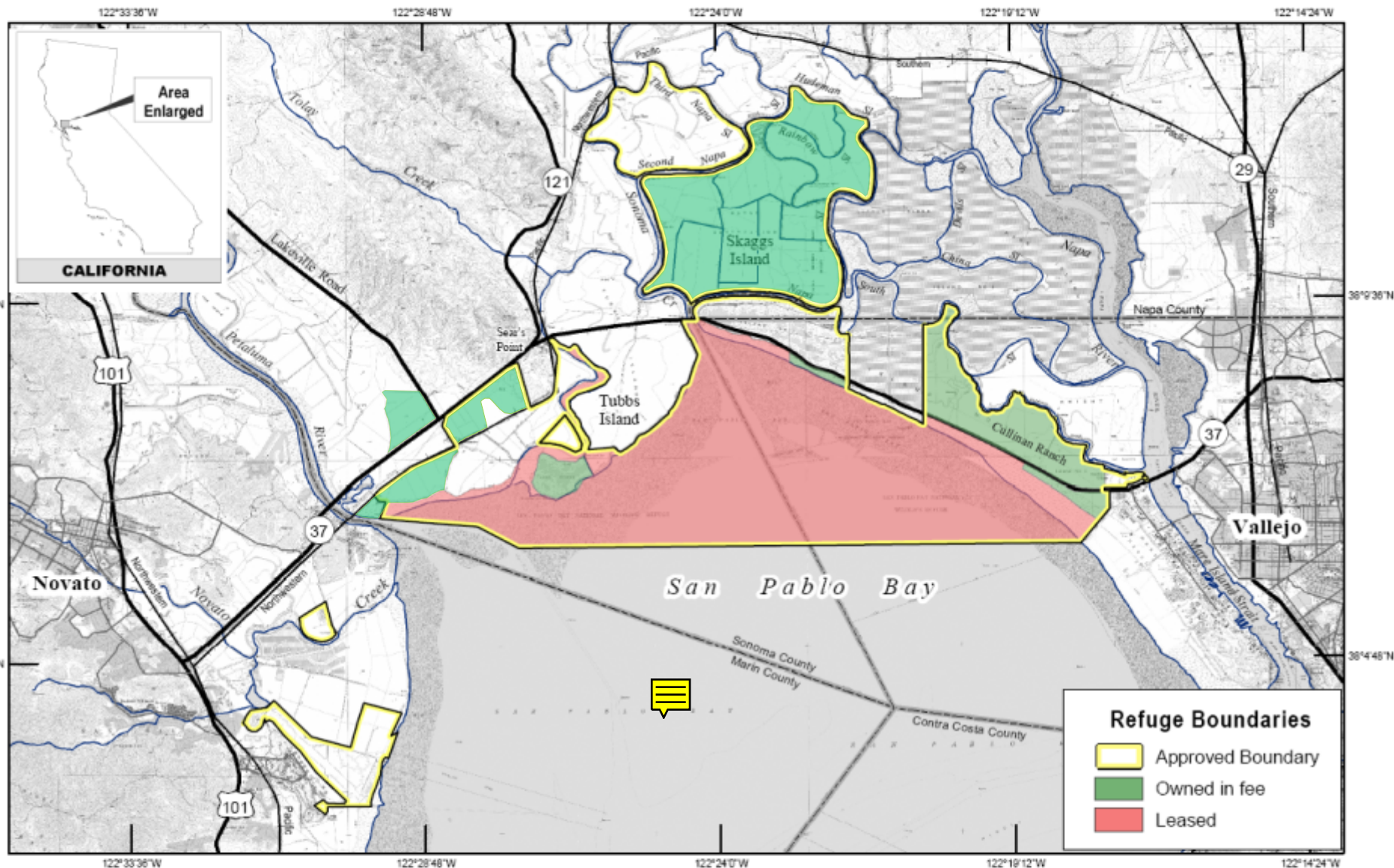


U.S. Fish & Wildlife Service

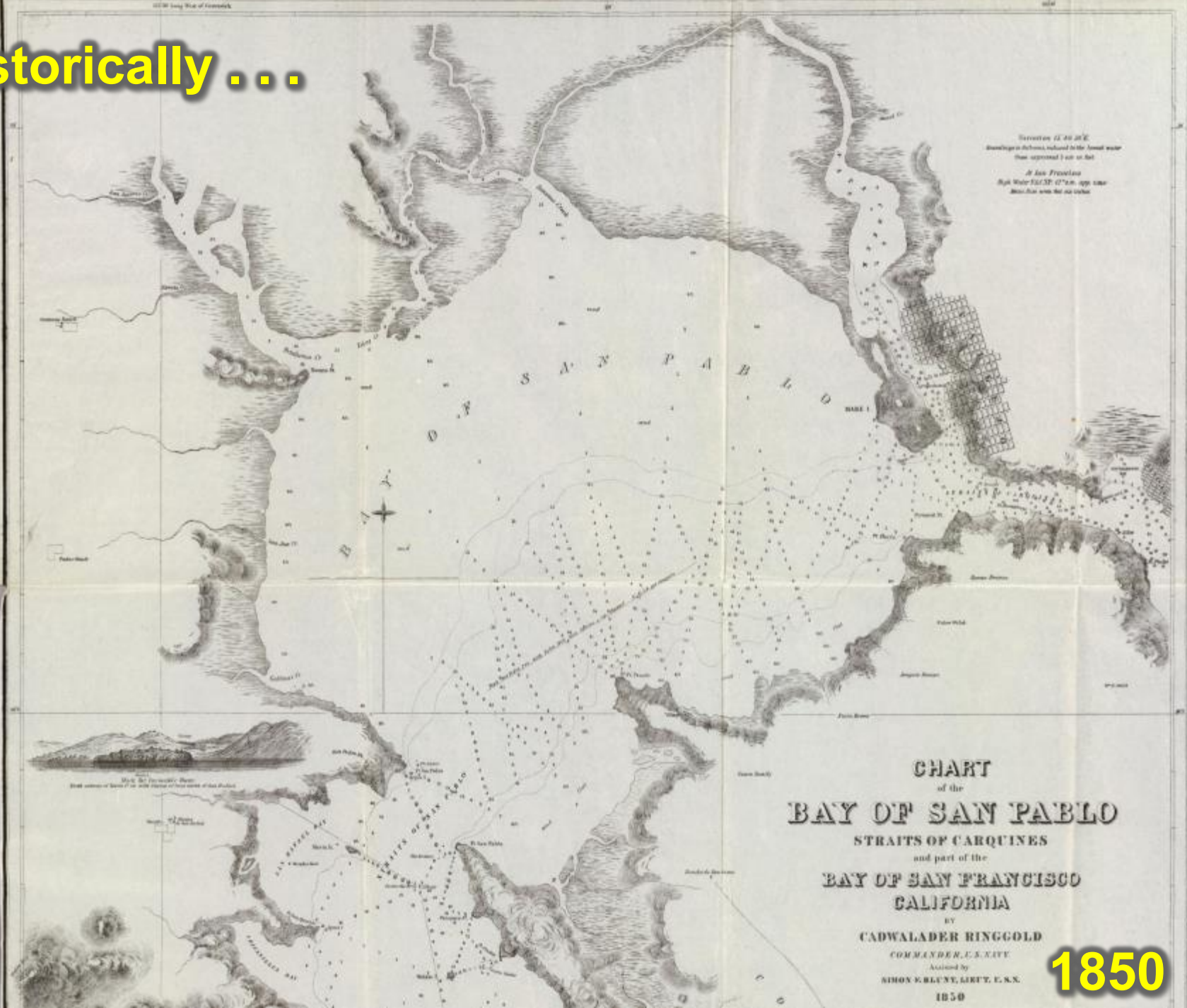
San Pablo Bay National Wildlife Refuge

Marin, Napa, Sonoma and Solano Counties, California

Land Status



Historically ...



Less historically . . .



Within our lifetimes . . .



**. . . we found some 40% of canvasbacks using the
Pacific Flyway, winter on San Pablo Bay . . .**

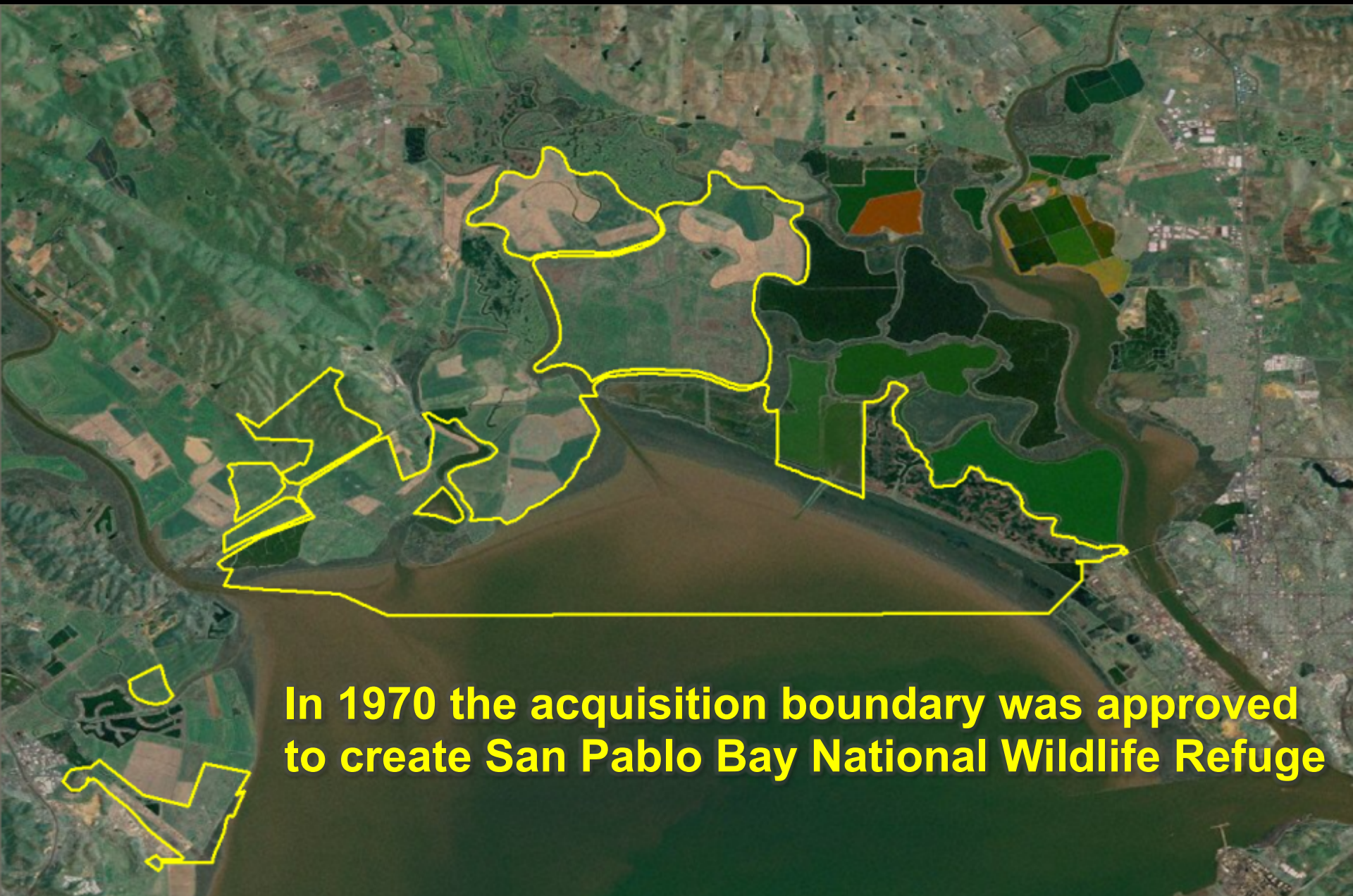
. . . couple this . . .



**. . . with a species of mouse
found only in pickle-weed . . .
Salt marsh harvest mouse**

**. . . and a species of secretive
marsh bird requiring estuarine
salt marsh habitat . . . California
Ridgeway's rail**

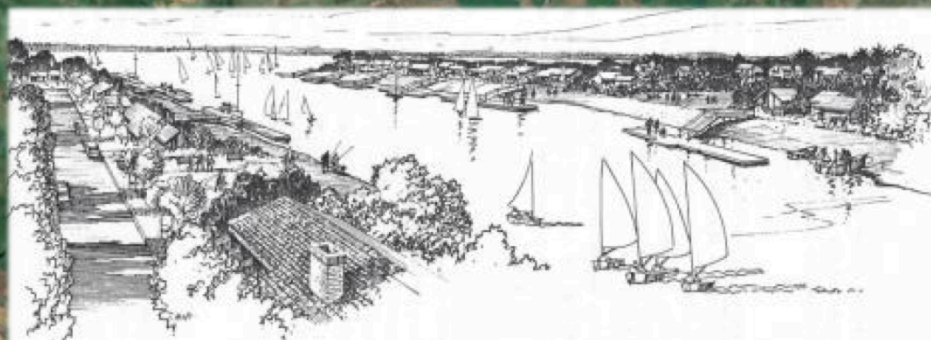




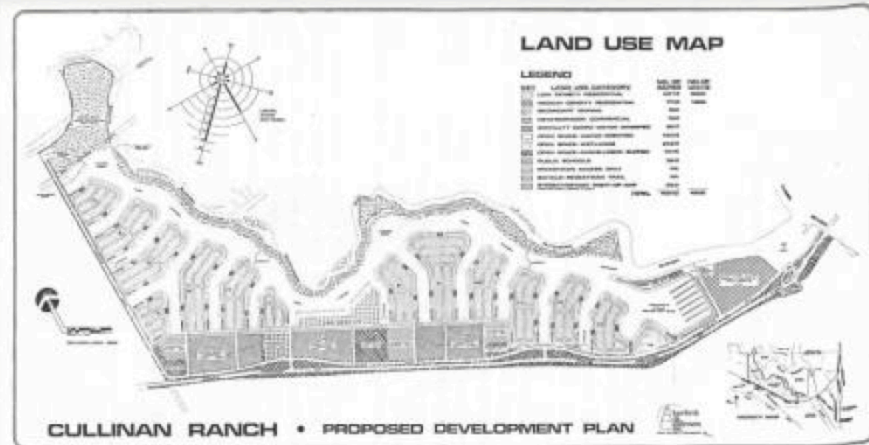
In 1970 the acquisition boundary was approved to create San Pablo Bay National Wildlife Refuge

An aerial photograph of a coastal wetland area. A large, irregularly shaped area is outlined in yellow, indicating a specific region of interest. Within this yellow-outlined area, there are several smaller, irregularly shaped areas outlined in pink, representing specific parcels of land. The surrounding landscape is a mix of green fields, brown patches, and a large body of water at the bottom.

The 80's saw 11,200 acres brought under refuge management through a 66 year lease from the California State Lands Commission and bits 'n snippets of habitat either purchased or conveyed.



VIEW OF INTERIOR CHANNEL & RESIDENTIAL PENINSULAS



1991 saw the acquisition of the 1,575 acre Cullinan Ranch through the efforts of a host of partners and pooling of funding



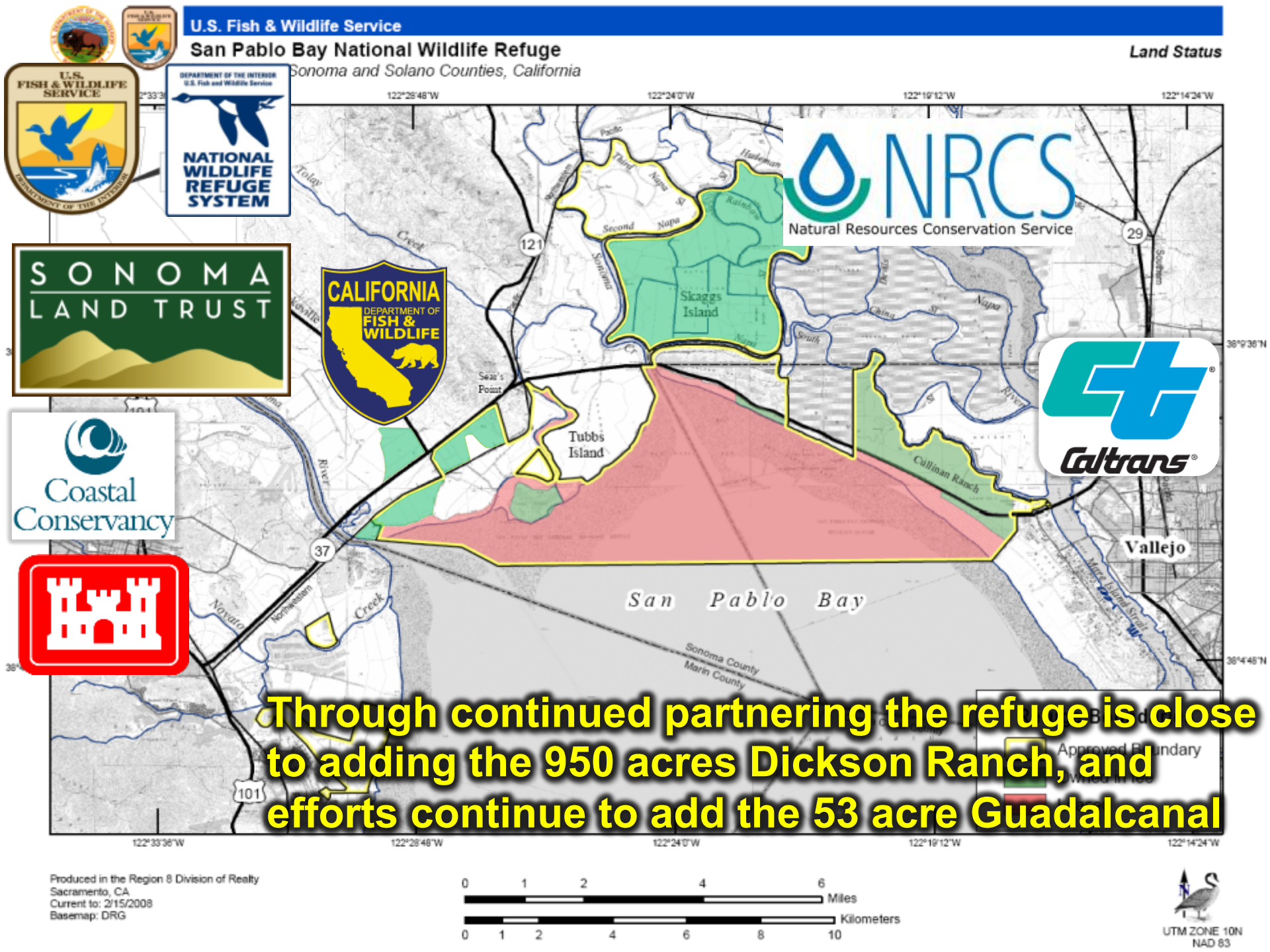
Through a long effort involving Congress and negotiations, the 3,300 acre Navy portion of Skaggs Island was transferred to the refuge in 2010



In 2013, through efforts spearheaded by Sonoma Land Trust, the 1,080 acre Haire Ranch completed the Skaggs Island acquisition puzzle



Working with Sonoma Land Trust, the North Parcel and Sears Point Units added 651 acres to the refuge in 2014.



U.S. Fish & Wildlife Service

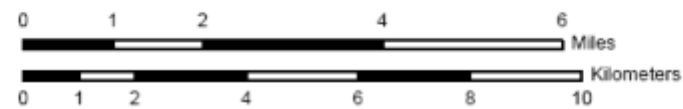
San Pablo Bay National Wildlife Refuge

Sonoma and Solano Counties, California

Land Status



Through continued partnering the refuge is close to adding the 950 acres Dickson Ranch, and efforts continue to add the 53 acre Guadalcanal



Now what?