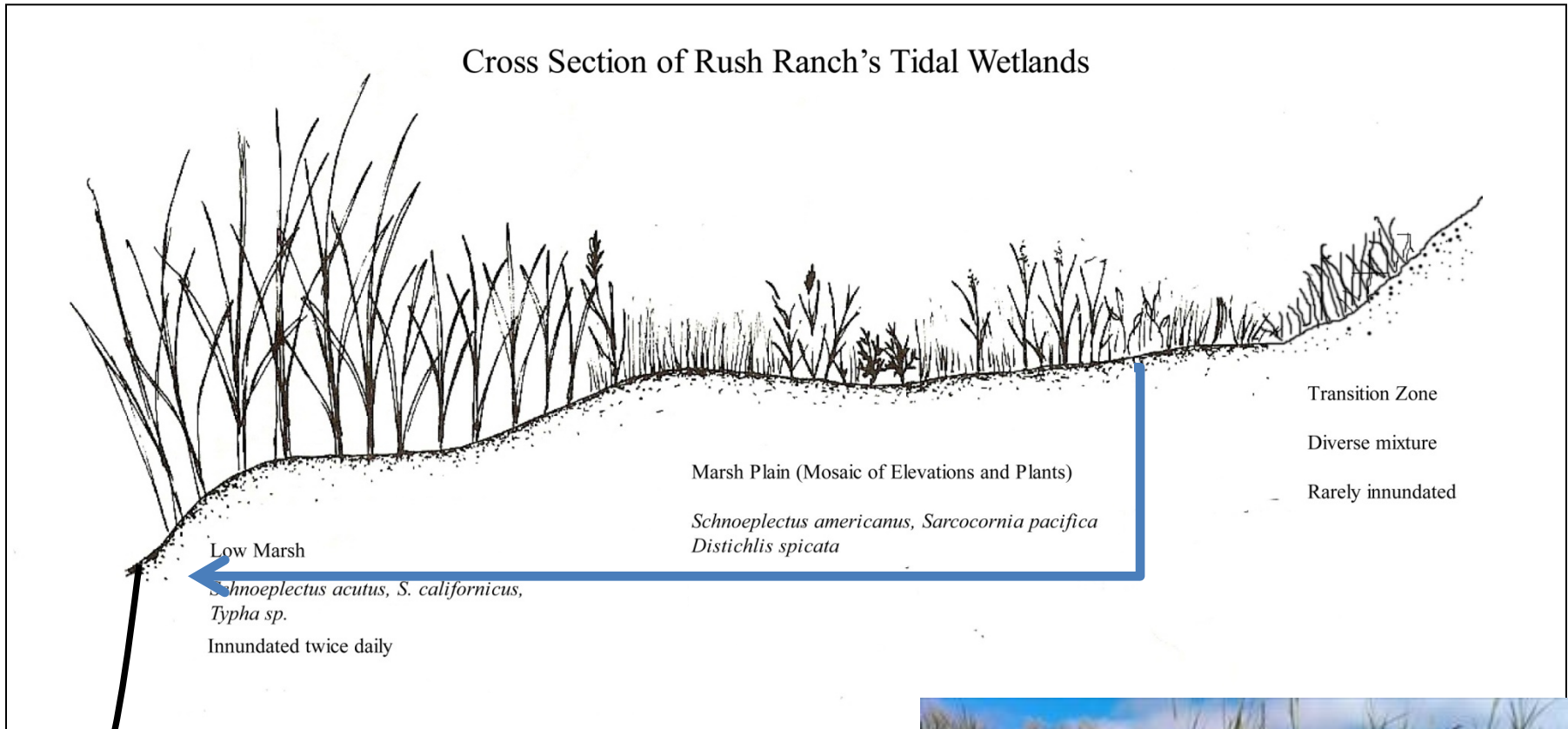




Active Research: Do juvenile fish depend on marsh plain habitat?

Cross Section of Rush Ranch's Tidal Wetlands



999

Active Research: What will happen to marsh plants as sea level rises?



Figure Adapted from Bertness, 1999

How does Rush Ranch change over time?





San Francisco Estuary



Ocean Water

Fresh Water

Source: Google

An estuary is:

A partially enclosed body of water where fresh and salt water meet and mix.



Suisun Marsh



What is a marsh?

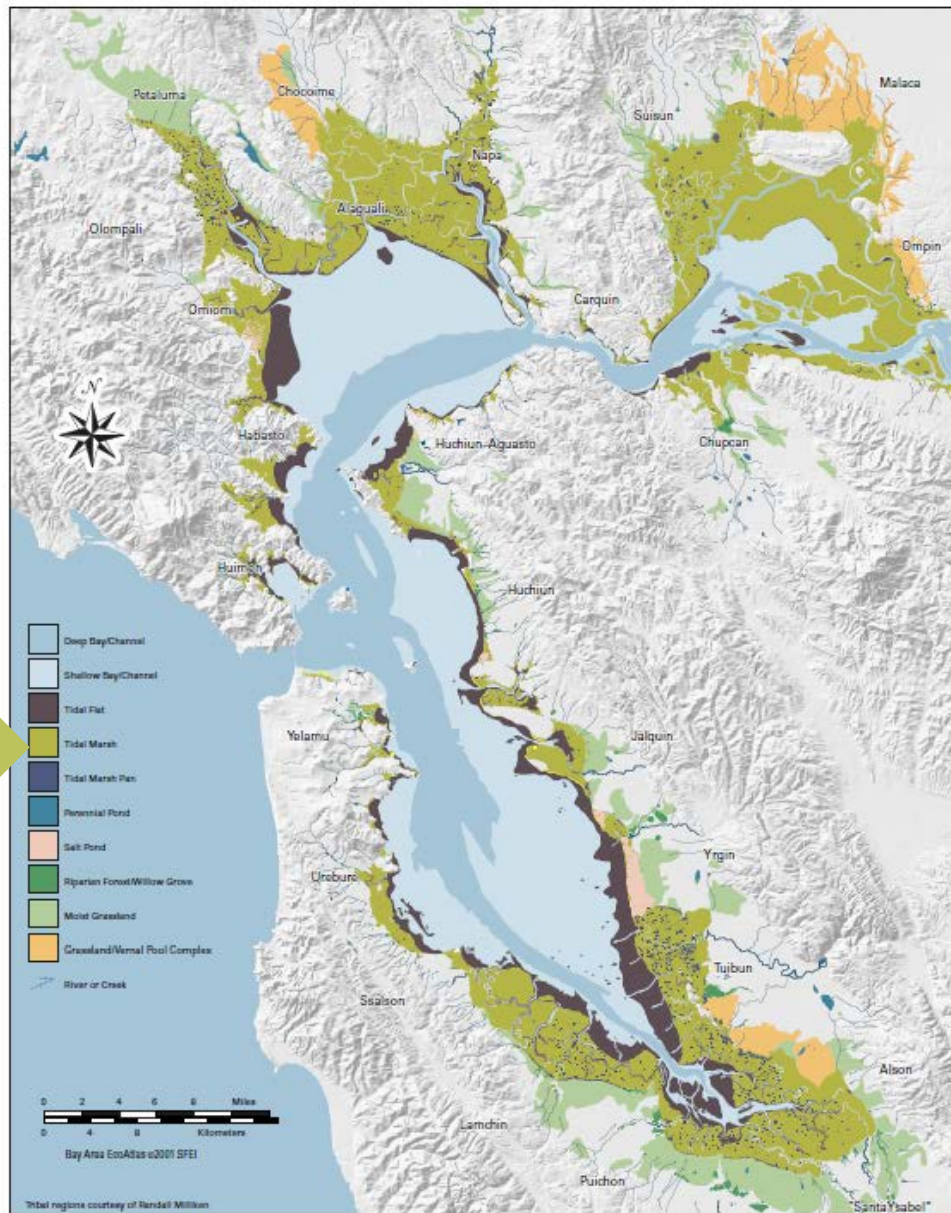
An area that is wet during at least part of the growing season and supports growth of grass-like plants.





Historical Baylands

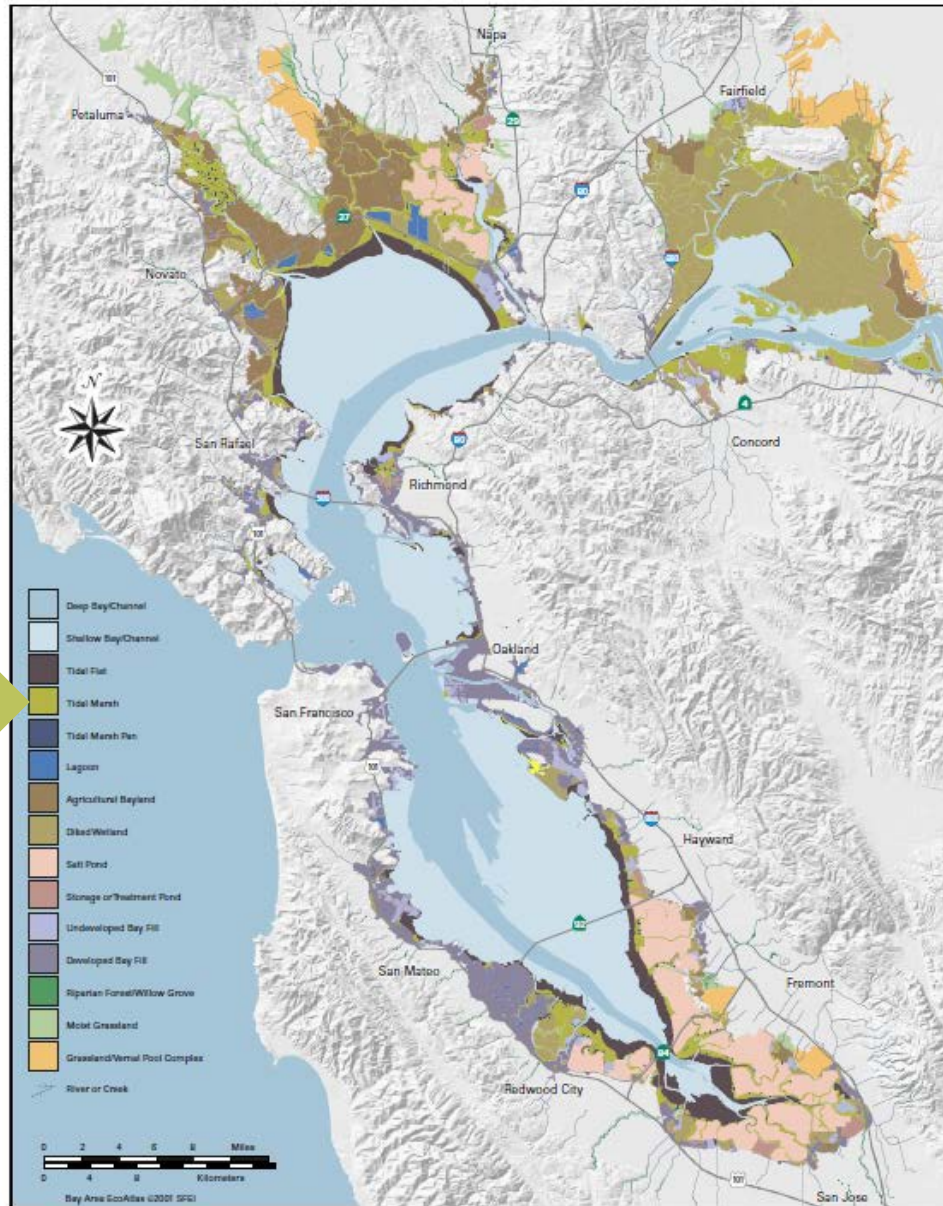
Tidal Marsh →



circa 1800

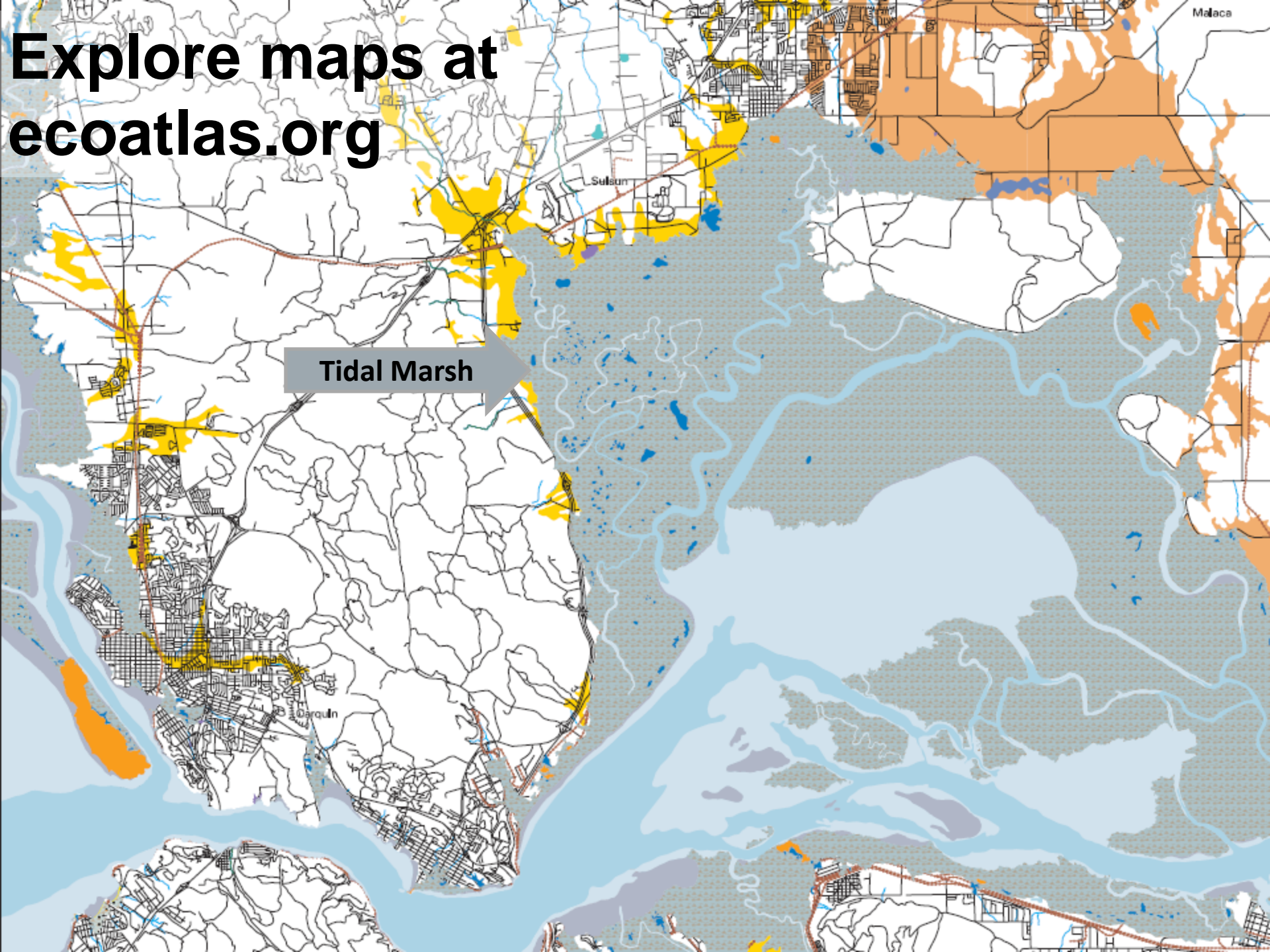
Tidal regions courtesy of Randall Milliken

Modern Baylands



Tidal Marsh

Explore maps at ecoatlas.org



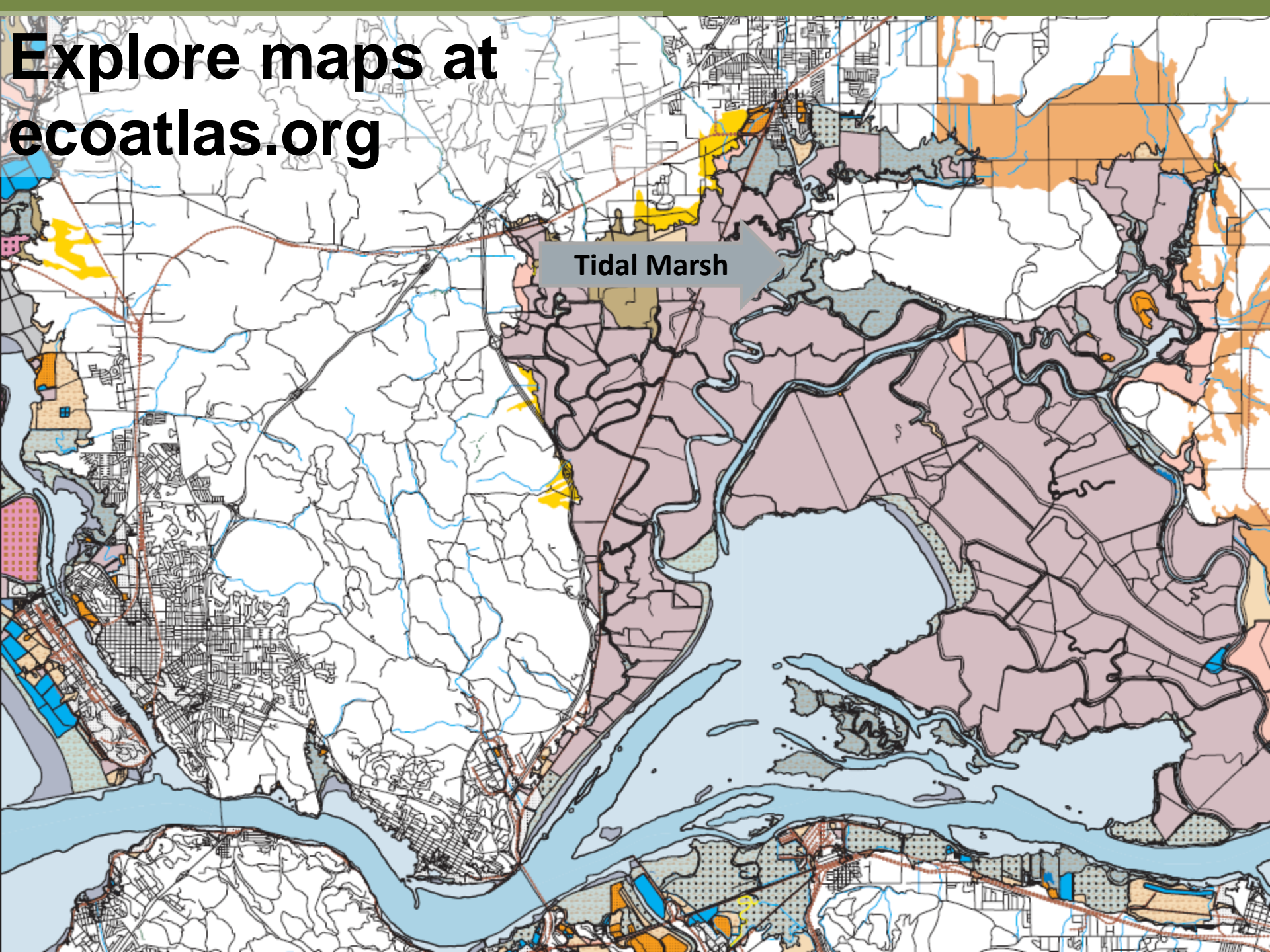
Tidal Marsh

Malaca

Sulau

Barquin

Explore maps at ecoatlas.org





Jo Davies



Dave Menke, USFWS



Eugene Hester, USFWS



Jo Davies



S. Ferner

Even more than a rare remnant . . .



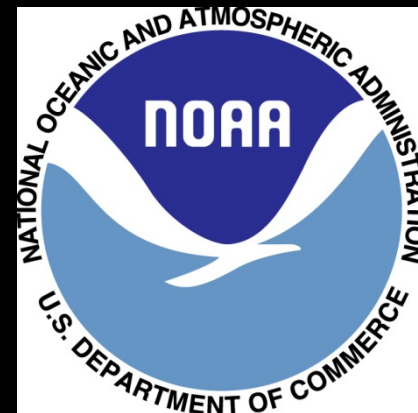
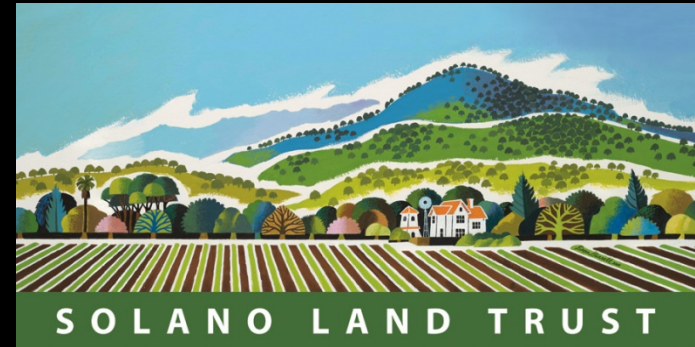
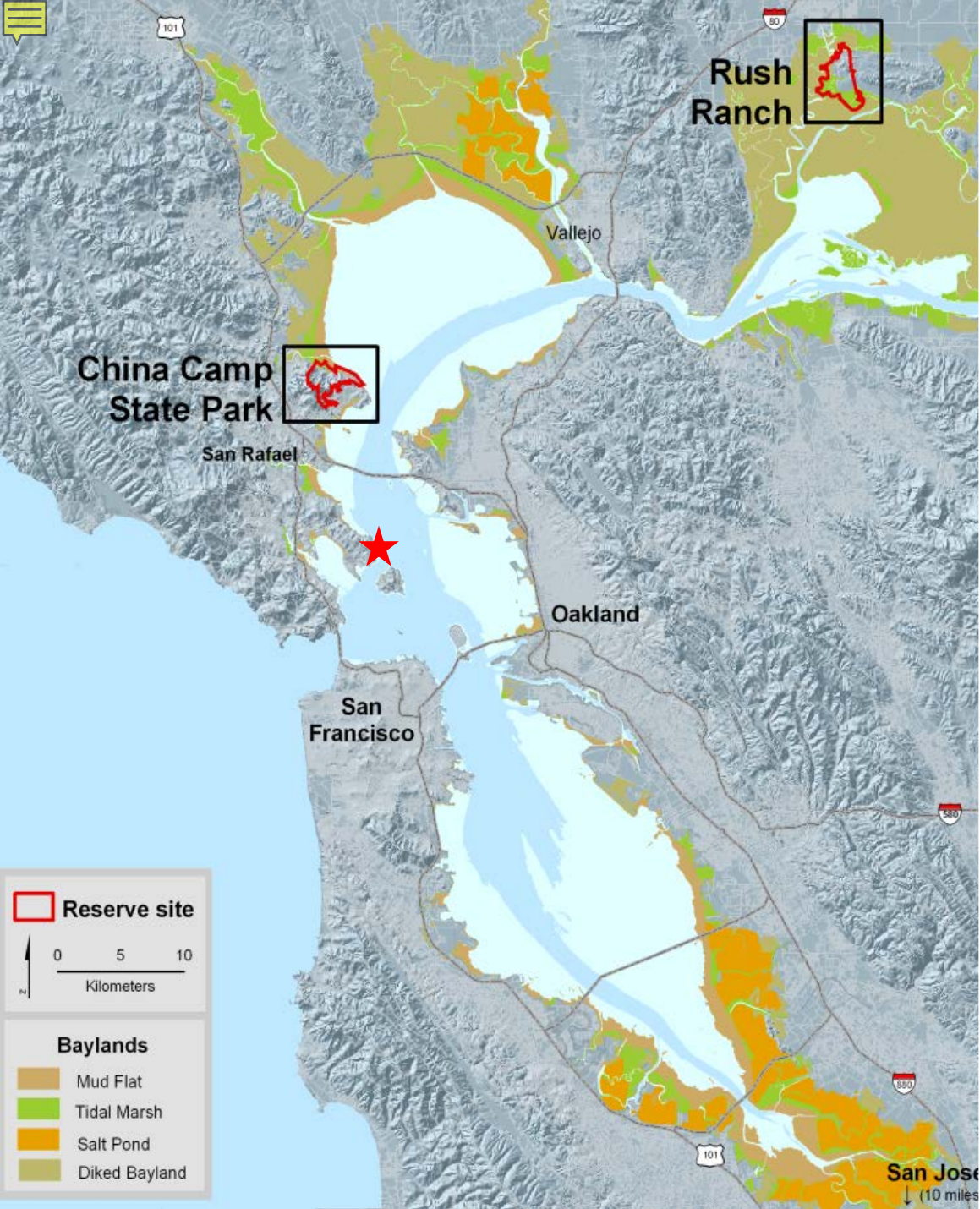


Transition zone from marsh to upland provides refuge habitat for endangered species.



Sinuuous, branching tidal channels (creeks)









Reserves Protected For:

- Long-term research and monitoring
- Education
- Resource stewardship





www.coast.noaa.gov/swmp



[Home](#) | [Estuary Video Gallery](#)

Browse and Filter Videos

Displaying (149) Videos

State Topic

All About Oysters



CURRICULUM


Lessons for middle and high school students



TEACHERS ON THE ESTUARY

To help middle and high school educators and activities feature hands-on learning, this is bundled with all the necessary tools

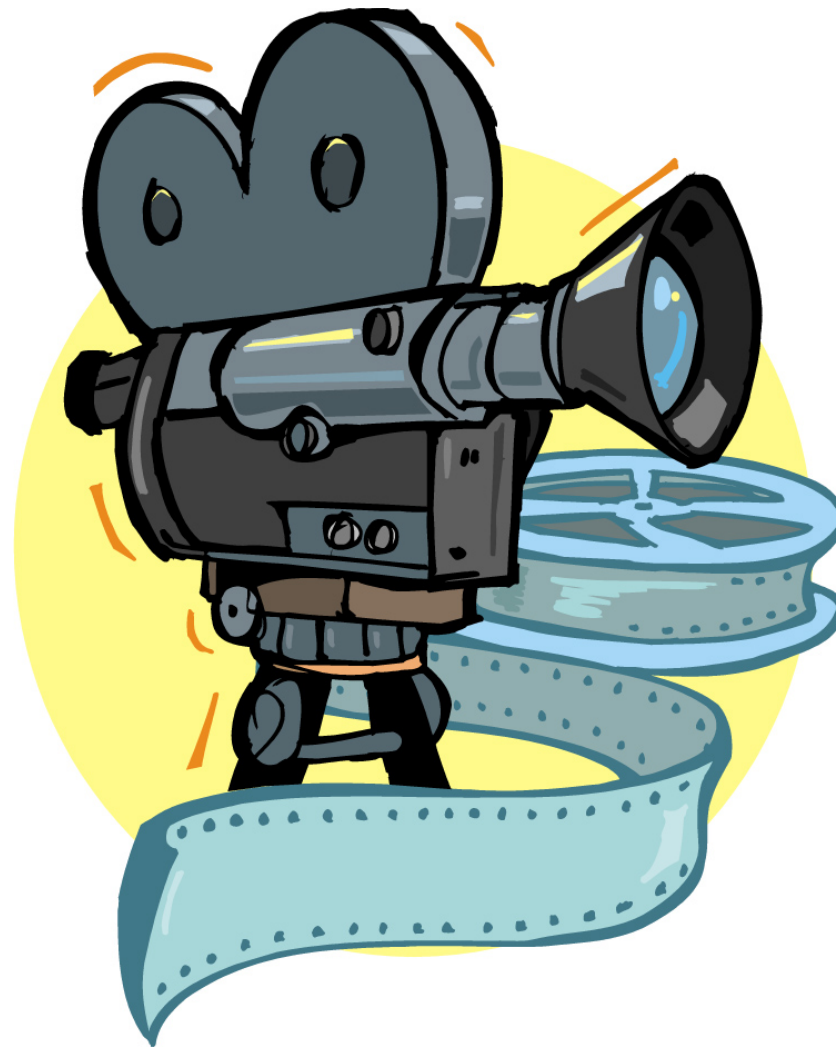
ADDITIONAL RESOURCES

 [About Our Curriculum](#)

 [Why Teach Estuaries?](#)



By Tom Muehleisen



https://www.nps.gov/pore/learn/photosmultimedia/multimedia_gwrp.htm